



Features & Benefits

- Organized and stocked inventory
- Valuable sales tool for bin fill placements
- Balanced inventory reduces cost
- Tylok provides a suggested inventory list of the most used product
- Single purchase order saves accounting time and money
- Always have the spare parts you need
- Customized product offering available
- Tylok part number chart and size chart provided for easy identification

Cabinet Attributes

- All welded, prime cold rolled steel
- Fully hemmed 1-1/2" bin fronts to hold labels and retain parts
- Compatible with most 12" deep bins drawer cabinets
- Durable blue powder coat finish, custom colors available
- Fittings & Cabinets made in the USA

Suggested Stock



SS-4-DMC-4
SS-4-DMC-6
SS-6-DMC-4
SS-6-DMC-6

10 EACH



SS-4-DFC-4
SS-6-DFC-6

10 EACH



SS-4-DU
SS-6-DU
SS-8-DU

10 EACH



SS-4-DF PLUG
SS-6-DF PLUG
SS-8-DF PLUG

10 EACH



SS-4-DCAP
SS-6-DCAP
SS-8-DCAP

10 EACH



SS-4-DELU-4
SS-6-DELU-6
SS-8-DELU-8

10 EACH



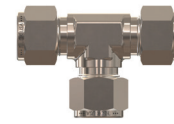
SS-4-DME-4
SS-6-DME-4
SS-6-DME-6
SS-8-DME-8

10 EACH



SS-4-DFE-4
SS-6-DFE-6

10 EACH



SS-4-DTTT-4
SS-6-DTTT-6
SS-8-DTTT-8

10 EACH



SS-4-DTT-4-4-K
SS-6-DTT-6-6-K
SS-8-DTT-8-8-K

3 EACH



SS-43S-D4D4
SS-43S-D6D6
SS-45-D8D8

3 EACH



SS-1R4-D4D4
SS-1R6-D6D6
SS-1R6-D8D8

3 EACH



LEAK DETECTOR

1 EACH

Part Number	Description	Dimensions (in.)		
		W	D	H
Cabinet-40B-CBC	CBC-Lok Suggested Stock	33-7/8"	12"	28-7/8"
Cabinet-40B-CS	CS-Lok Suggested Stock			
Cabinet-40B	Empty Cabinet			